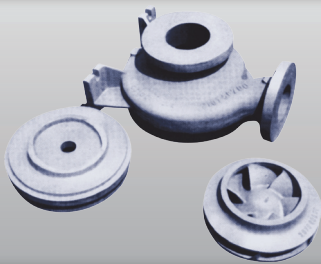


NICKEL BASED CORROSION RESISTANT ALLOYS

Altona Reference EA	Equivalent Trade Reference	Trade Name	Basic Chemical Composition (%)								Typical Mechanical Properties			Hardness HB
			C	Cr	Ni	Mo	V	W	Fe	Others	Yield Strength (MPa)	Tensile Strength (MPa)	Elongation (%)	
07920	N12MV 2.4882	Hastelloy B	≤ 0,12	≤ 1,0	Bal.	28,0	04	—	5,0	—	≥ 275	≥ 525	≥ 6,0	160 220
07955	2.4685	Hastelloy B1	≤ 0,03	≤ 1,0	Bal.	28,0	—	—	≤ 6,0	—	250	500	20,0	150 210
07948	~ 2.4617	Hastelloy B2	≤ 0,02	≤ 1,0	Bal.	28,0	—	—	≤ 2,0	—	250	500	25,0	140 200
07909	CW12MW 2.4883	Hastelloy C	≤ 0,12	16,5	Bal.	17,0	0,3	4,5	6,0	—	≥ 275	≥ 495	≥ 4,0	140 200
07924	2.4686	Hastelloy C1	≤ 0,03	16,5	Bal.	17,0	—	—	≤ 7,0	—	250	450	20,0	140 200
07946	~ 2.4610	Hastelloy C4	≤ 0,02	16,0	Bal.	16,0	—	—	≤ 3,0	—	250	450	20,0	140 200
07945	~ 2.4602	Hastelloy C22	≤ 0,02	21,5	Bal.	13,5	—	3,0	4,0	—	250	450	20,0	140 200
07934	~ 2.4819	Hastelloy C276	≤ 0,02	16,5	Bal.	16,0	—	4,0	5,0	—	250	450	20,0	140 200
07947	—	Hastelloy D	≤ 0,12	—	Bal.	—	—	—	≤ 2,0	Si 9,0 Cu 3,0	—	—	—	250 350
07941	CW6MC 2.4856	INCONEL 625	≤ 0,06	21,5	61,0	9,0	—	—	2,5	Nb+Ta 3,65	≥ 275	≥ 485	≥ 25	180 320
07906	CZ 100 2.4170	—	≤ 1,0	—	≥ 95,0	—	—	—	≤ 1,0	—	≥ 125	≥ 345	≥ 10,0	150 200

NOTE: * HASTELLOY is a registered trademark from HAYNES INTERNATIONAL.
INCONEL is a trademark from INCO ALLOYS INTERNATIONAL.



ELECTRO AÇO ALTONA S.A.

Rua Eng^o Paul Werner, 925
89030-900 - Blumenau-SC
sales@altona.com.br

Tel.: +55 (47) 3321-7772
Fax: +55 (47) 3321-7791
www.altona.com.br

ISO 9001
ISO/TS 16949
BUREAU VERITAS
Certification



NICKEL BASED CORROSION RESISTANT ALLOYS**General Features and Recommended Applications**

Nickel-based alloys are used for parts of pumps, valves, fittings and miscellaneous components designed for the chemical industry to work under extremely severe corrosive conditions, generally associated with high temperatures.

The selection of the most suitable alloy for each case involves the consideration of several variables such as: Composition and concentration of the corrosive medium, working temperature, presence of contaminants, etc. Therefore, just a few general and not limiting features and applications are given below.

EA-07920
EA-07955
EA-07948

Nickel and Molybdenum based alloys specially recommended for processing chlorhydric acid in all concentration and temperature levels, including boiling temperature.

EA-07909
EA-07924
EA-07946
EA-07945
EA-07934

Nickel, Chrome and Molybdenum based alloys specially recommended for the use in connection with oxidizing acids and acid mixtures under high temperatures.

EA-07947

Nickel and Silicon based alloy recommended for the use in connection with sulphuric acid in all concentration and temperature levels and also with organic acids.

EA-07941

Nickel – Chromium – Molybdenum alloy with niobium, especially resistant to pitting and crevice corrosion, recommended for the use in severely corrosive environments. The alloy does not become brittle at cryogenic temperatures and maintains excellent creep-rupture properties at high temperatures.

EA-07906

Cast nickel resistant to high concentrations of alkali mediums in high temperatures including fused caustic soda.